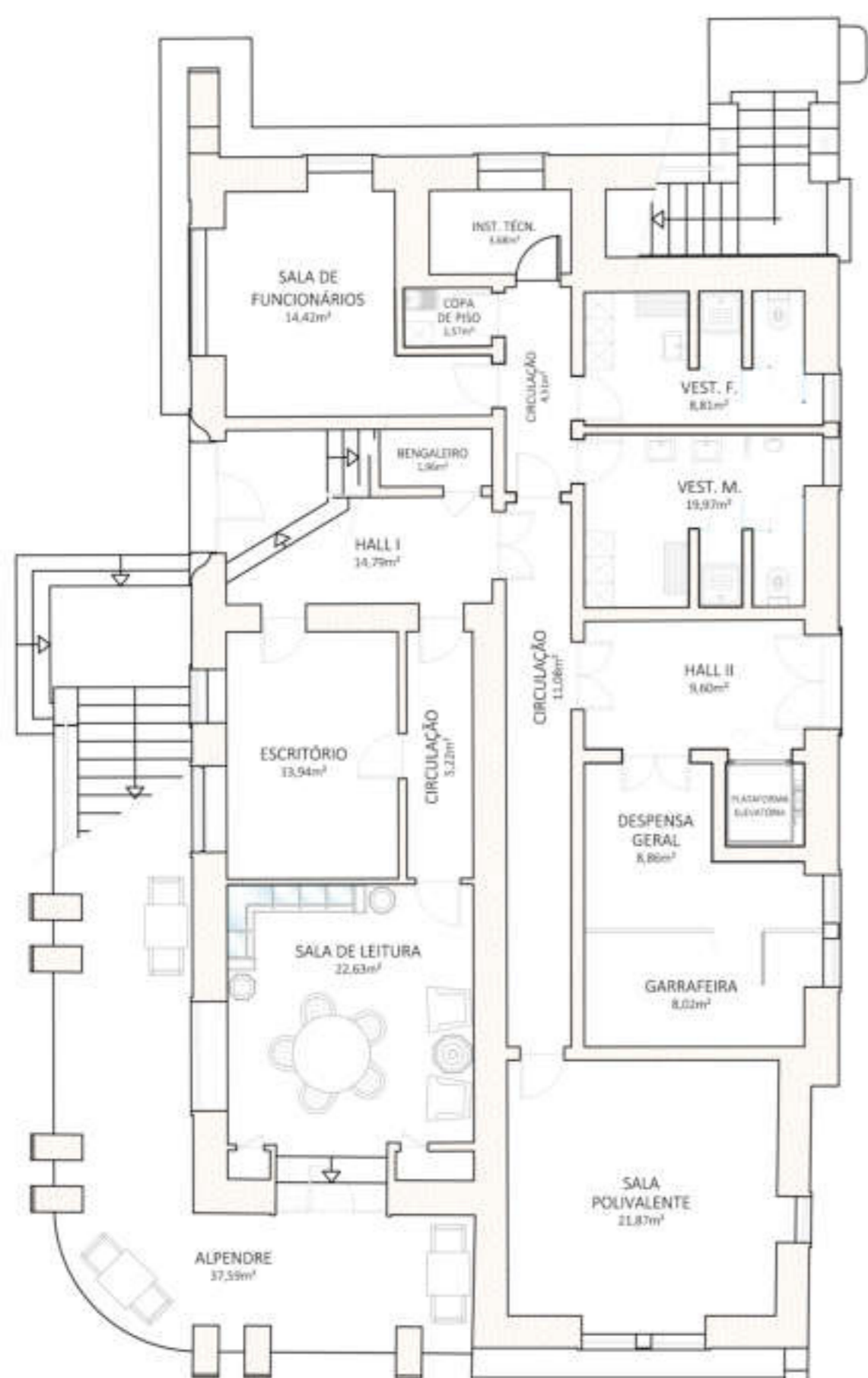




no respeito e valorização de um Património peculiar

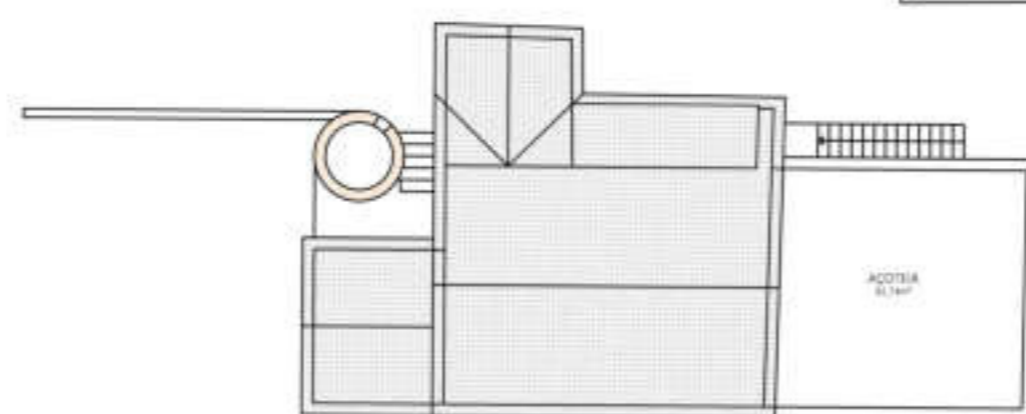


Habit.1 Do. Tm

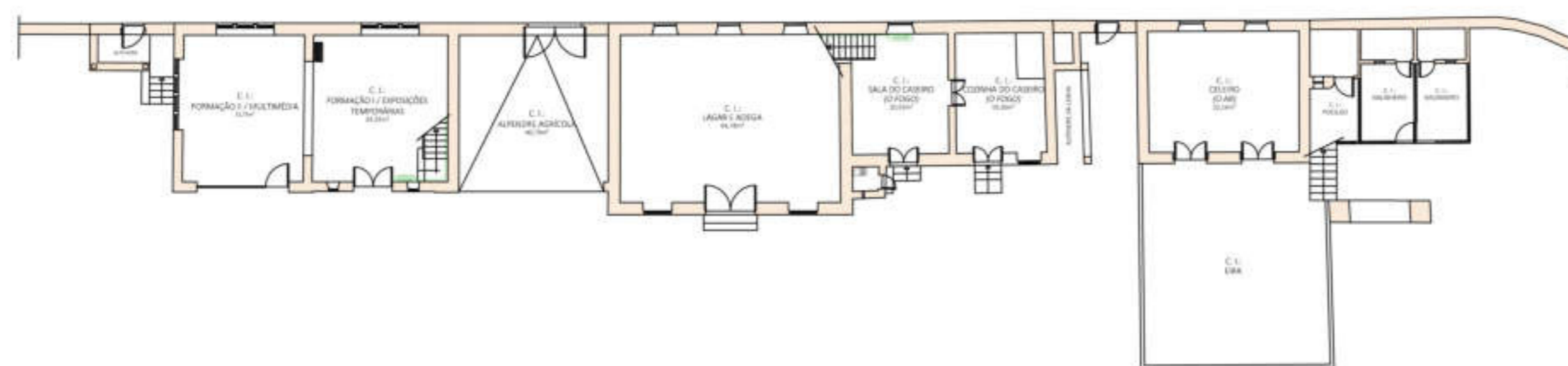


Habit.1 Do. Sqm

Cafeteria Casa de Chá - 1920



Habit.1 Do. Sqm



Centro de Interpretação Ambiental - 1920

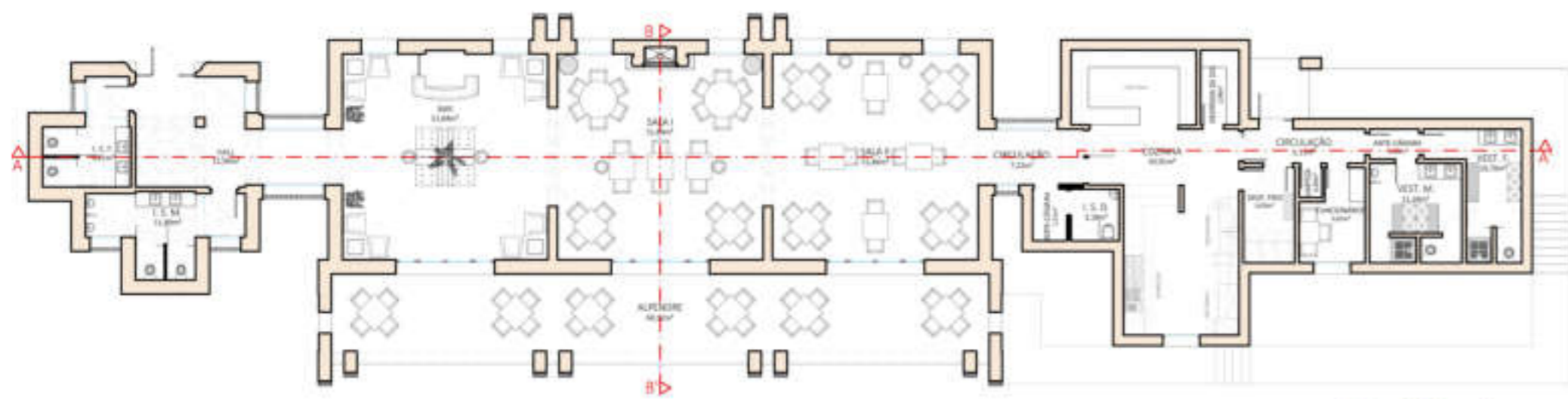


Habit.1 Do. Tm

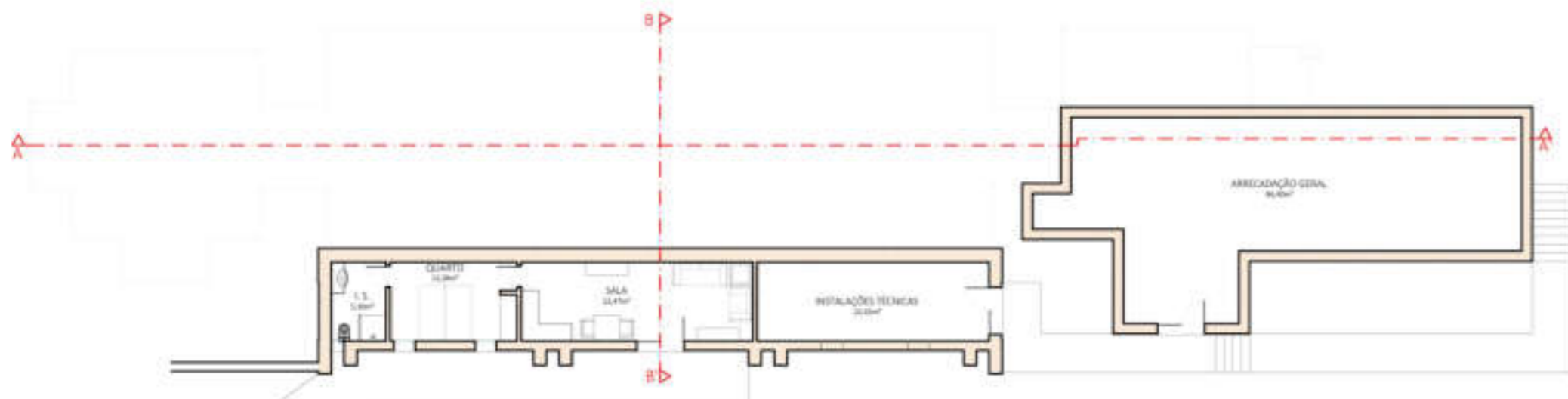




revivificar princípios, vocabulário e materiais da arquitectura original



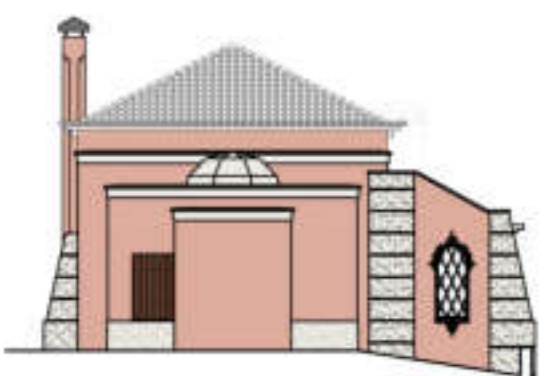
Hotel De Turismo



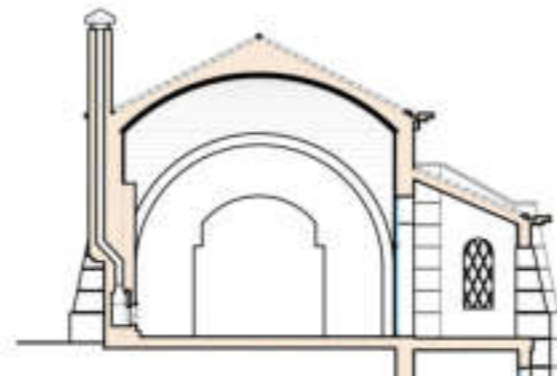
Hotel De Turismo



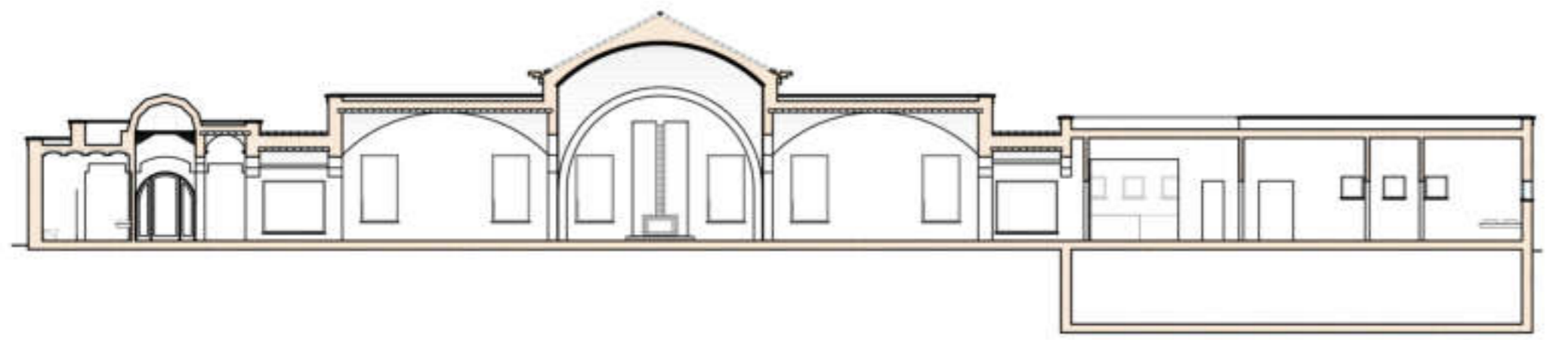
Hotel De Turismo



Hotel De Turismo

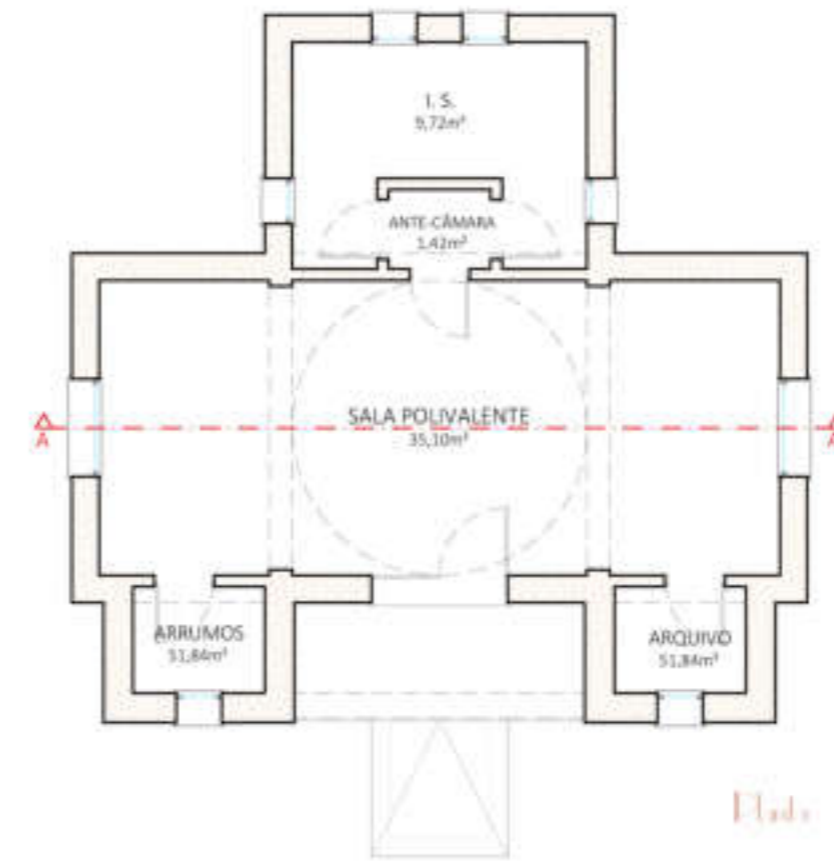


Hotel De Turismo

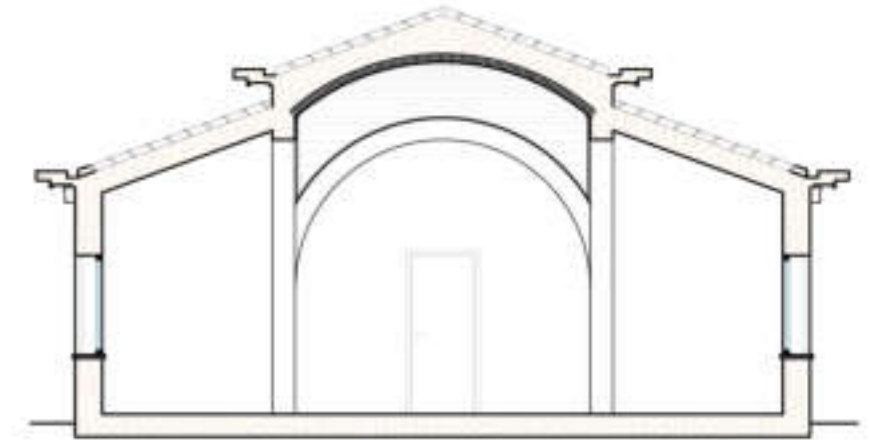


Edifício do Restaurante

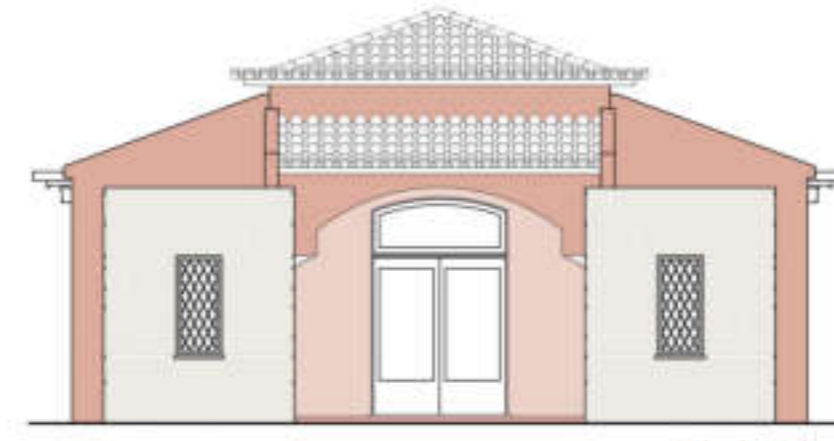
Edifício do Restaurante 15.12.2000



Pavilhão Infantil

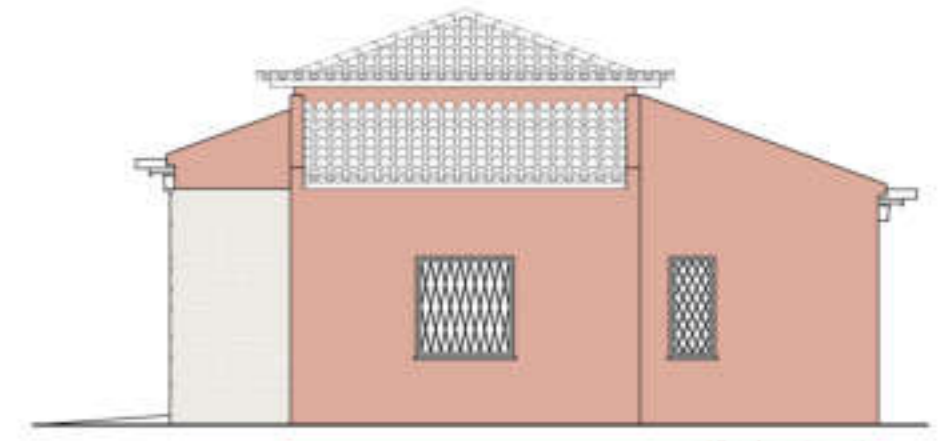


Pavilhão Infantil

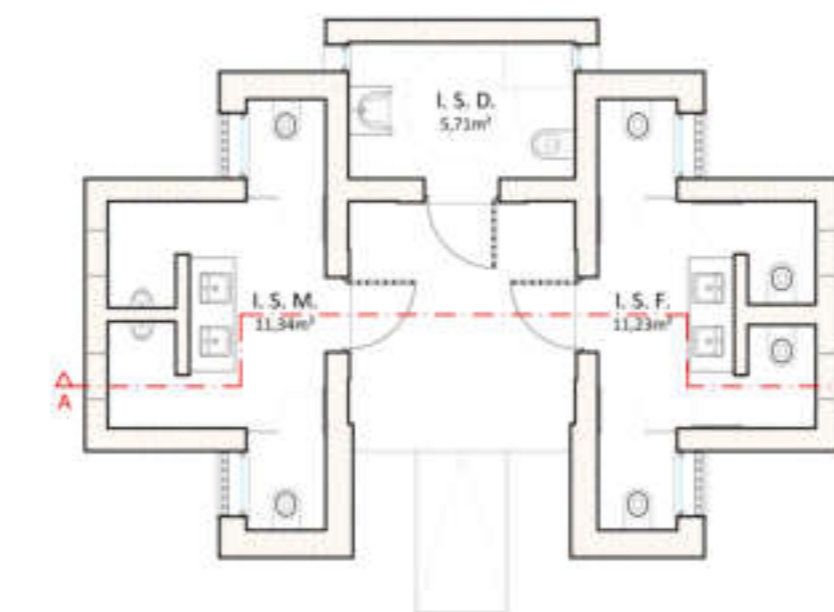


Pavilhão Infantil

Pavilhão Infantil 15.12.2000



Pavilhão Infantil



Pavilhão das Instalações Sanitárias



Pavilhão das Instalações Sanitárias

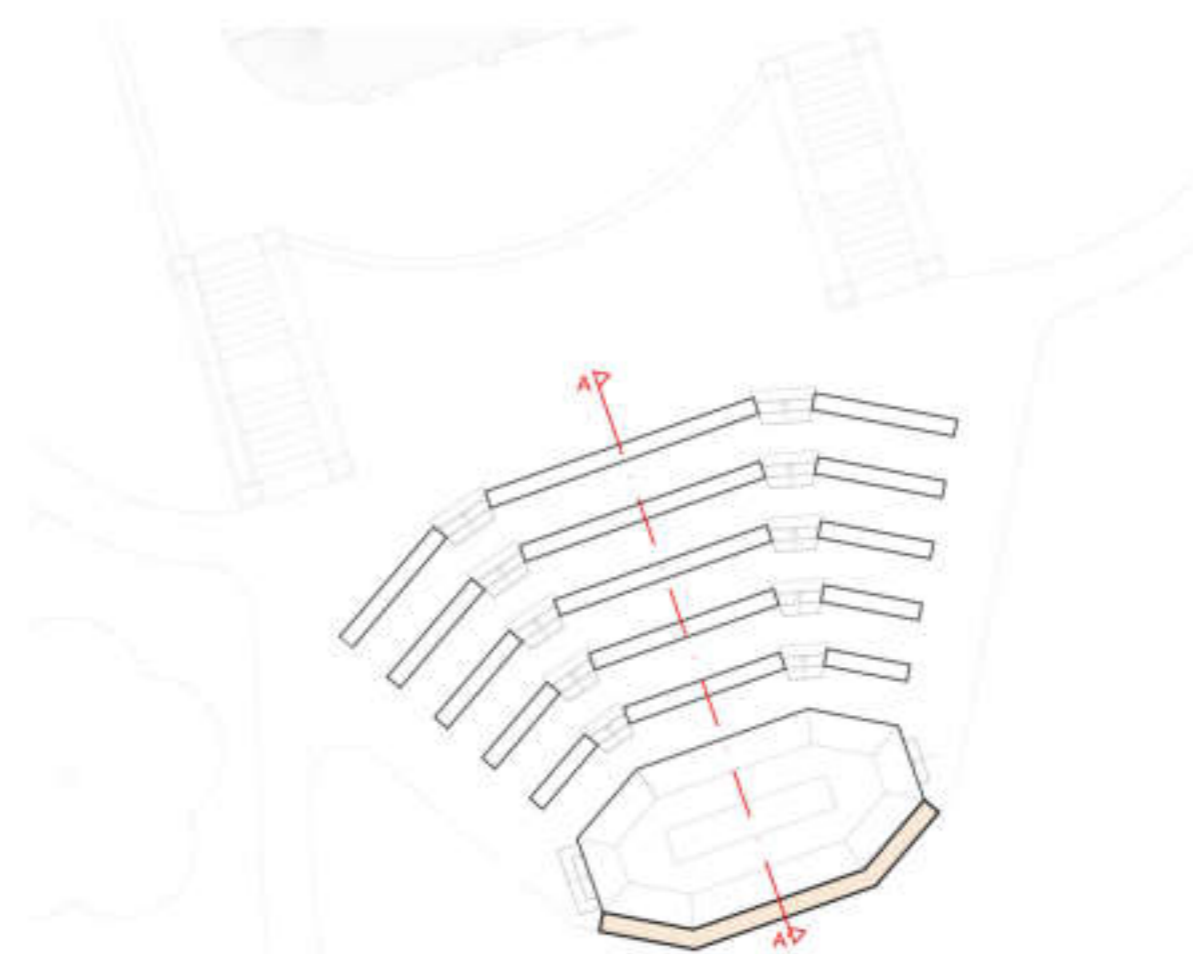


Pavilhão das Instalações Sanitárias

Pavilhão das Instalações Sanitárias 15.12.2000



Pavilhão das Instalações Sanitárias

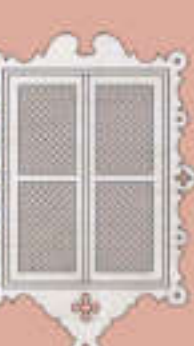


Anfiteatro Infantil



Anfiteatro Infantil

Anfiteatro Infantil





reactivar sistemas (hídrico, circulação, culturais e fruição lúdica) numa lógica pedagógica



1 Maluculata  
 2 Fimbriata Alba  
 3 Anália Maki

1  
 2  
 3 Maluculata  
 4  
 5 Mini-Maki



12 Mini Maggi  
 13 Gubra  
 14 Jose

12 Maluhana Gubra  
 13 Alfredo Capellini  
 14 D. Pedro  
 15 Bonkelaerii



Japoneiras